

## The process

Landholders can contact the Conversation Partners Program and ask for information to be sent, including an application form. Information and application forms are also available on the Conversation Partners Program section of the DECCW website.

Applications are assessed to determine the most suitable options which meet the needs of landholders and conservation criteria. Documentation is then prepared and finalised for the relevant option in consultation with the landholder. All options are voluntary.

## Support for landholders

The Conservation Partners Program supports landholders making a voluntary commitment to land conservation by:

- providing information and advice on property planning and management issues
- providing the Bush Matters newsletter twice a year
- providing conservation management notes
- assisting landholders with on-ground works to address management issues
- providing networking opportunities
- providing identification signs



DECCW E. Mathon

## Further information

**For more information on the Conservation Partners Program options available for you or your organisation:**

visit the DECCW website at [www.environment.nsw.gov.au/cpp/ConservationPartners.htm](http://www.environment.nsw.gov.au/cpp/ConservationPartners.htm)

email the Conservation Partners Program at [conservation.partners@environment.nsw.gov.au](mailto:conservation.partners@environment.nsw.gov.au)

Conservation Programs Delivery Unit  
Landscapes and Ecosystems Conservation Branch  
Department of Environment, Climate Change and Water  
Level 12, 59-61 Goulburn Street, Sydney  
PO Box A290, Sydney South NSW 1232  
Infoline 1300 361 967

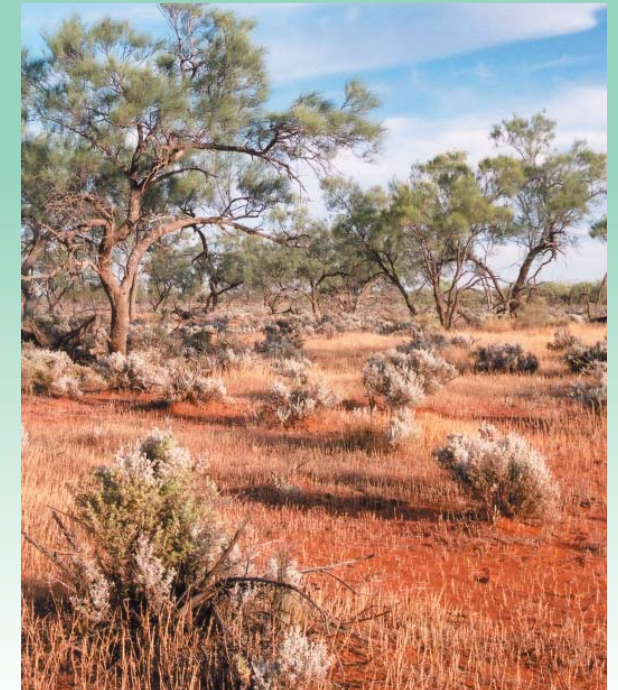
**For information on the Land For Wildlife Scheme:**  
visit the Community Environment Network website at:  
[www.cen.org.au](http://www.cen.org.au)

Email [admin@cen.org.au](mailto:admin@cen.org.au)  
Telephone 02 4349 4756

DECCW 2010/309 ISBN 978 1 74232 882 9  
Cover photo DECCW R. Shepherd



# Community Voluntary Conservation



DECCW L. Brodie



Environment,  
Climate Change  
& Water



The Conservation Partners Program aims to encourage and assist landholders to look after natural heritage, native vegetation, wildlife and habitats, geological features or to protect Aboriginal cultural sites or places on their land. The program is managed and co-ordinated across the state by the Department of Environment, Climate Change and Water NSW (DECCW).

## Options for landholders

The Conservation Partners Program offers landholders several options to become involved with conservation on their property. Entry to any of these options is voluntary and provides landholders with a range of choices to suit their needs. Land can be privately or publicly owned or leased from the Crown.

Under the *National Parks and Wildlife Act 1974*, Conservation Agreements and Wildlife Refuges provide longstanding partnership opportunities.

You can also register your property with the Conservation Partners Program. Another non-statutory property registration scheme is Land for Wildlife which is co-ordinated in NSW by the Community Environment Network.

## Conservation Agreements

This option is most suited for landholders who have areas of high conservation value including native vegetation, wildlife habitat, geological features or Aboriginal cultural heritage. Landholders who wish to make an in-perpetuity (permanent) commitment to conservation can ensure that the conservation values on their land are legally protected before and after they leave the property. The Agreement is registered on the land title and transfers to subsequent owners when the land is sold. Land under a permanent Conservation Agreement is exempt from Council rates, and tax concessions may also apply.

## Wildlife Refuges

This option is most suited for landholders who have a variety of natural, modified or artificial wildlife habitats (eg woodlots, dams) which may include remnant native vegetation and who want to commit their land for the protection and conservation of wildlife and their habitats. A Wildlife Refuge is noted on the land title. The Wildlife Refuge status remains even after sale. Landowners can make changes to the status of the Refuge at any time.



## Property Registration

Landholders who are interested in wildlife conservation and wish to learn more can voluntarily register their property with the DECCW Conservation Partners Program. A "Conserve Wildlife" sign may be purchased and partners receive the *Bush Matters* newsletter.

Another voluntary property registration scheme is Land for Wildlife. This scheme is co-ordinated by the Community Environment Network ([www.cen.org.au](http://www.cen.org.au)) in partnership with DECCW. Land for Wildlife is free to join and is implemented in some regions of the state by local community groups or local government. Land for Wildlife registration is not legally binding and on sale of the property, the registration ceases, but may be taken on by a new landholder.

